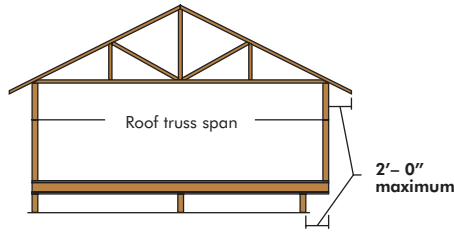
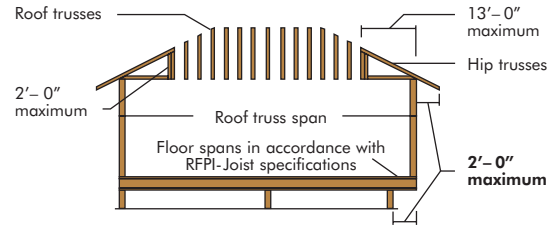


CANTILEVER REINFORCEMENT



See table below for RFPI-Joist reinforcement requirements at cantilever.



For hip roofs with the hip trusses running parallel to the cantilevered floor joists, the I-joist reinforcement requirements for a span of 26' may be used.

RFPI CANTILEVER REINFORCEMENT METHODS ALLOWED

RFPI-Joist Depth (in)	Roof Truss Span (ft)	ROOF LOADINGS												
		TL = 35 psf LL not to exceed 20 psf				TL = 45 psf LL not to exceed 30 psf				TL = 55 psf LL not to exceed 40 psf				
		RFPI-Joist Spacing (in)				RFPI-Joist Spacing (in)				RFPI-Joist Spacing (in)				
		12	16	19.2	24	12	16	19.2	24	12	16	19.2	24	
9½	26	N	N	N	1	N	N	1	2	N	N	1	2	X
	28	N	N	1	1	N	N	1	2	N	1	2	X	X
	30	N	N	1	1	N	1	1	2	N	1	2	X	X
	32	N	N	1	2	N	1	1	X	N	1	2	X	X
	34	N	N	1	2	N	1	2	X	N	2	X	X	X
	36	N	N	1	2	N	1	2	X	N	2	X	X	X
11½	26	N	N	1	1	N	N	1	2	N	1	1	2	2
	28	N	N	1	1	N	1	1	2	N	1	1	2	2
	30	N	N	1	1	N	1	1	2	N	1	1	2	2
	32	N	N	1	1	N	1	1	2	N	1	2	2	2
	34	N	N	1	1	N	1	1	2	N	1	2	X	X
	36	N	1	1	2	N	1	1	2	N	1	2	X	X
14	26	N	N	N	1	N	N	N	1	N	N	1	1	1
	28	N	N	N	1	N	N	1	1	N	N	1	1	2
	30	N	N	N	1	N	N	1	1	N	1	1	2	2
	32	N	N	N	1	N	N	1	1	N	1	1	2	2
	34	N	N	N	1	N	N	1	2	N	1	1	2	2
	36	N	N	1	1	N	1	1	2	N	1	1	2	2
16	26	N	N	N	1	N	N	1	1	N	N	1	1	1
	28	N	N	N	1	N	N	1	1	N	1	1	2	2
	30	N	N	N	1	N	N	1	1	N	1	1	2	2
	32	N	N	N	1	N	N	1	1	N	1	1	2	2
	34	N	N	1	1	N	N	1	2	N	1	1	2	2
	36	N	N	1	1	N	1	1	2	N	1	1	2	2
16	38	N	N	1	1	N	1	1	2	N	1	1	2	2
	40	N	N	1	1	N	1	1	2	N	1	2	2	2
	42	N	N	1	1	N	1	1	2	N	1	2	X	X

Notes:

- N = No reinforcement required.
- 1 = RFPIs reinforced with 2³/₃₂" Wood Structural panel or APA RimBoard on one side only.
- 2 = RFPIs reinforced with 2³/₃₂" Wood Structural panel or APA RimBoard on both sides or double I-joist.
- X = Try a deeper joist or closer spacing.
- Color coding in table is matched to details on page 22 & 23.
- Maximum load shall be: Total roof load as shown in chart (includes 15 psf roof dead load), 50 psf floor total load, and 80 plf wall load. Wall load is based on 3'-0" maximum width window or door openings. For larger openings, or multiple 3'-0" width openings spaced less than 6'-0" o.c., additional joists beneath the opening's cripple studs may be required.
- Table applies to joists 12" to 24" o.c. Use 12" o.c. requirements for lesser spacings.